

# MONTHLY MEMBERSHIP PROGRESS REPORT

LOCATION INDIA

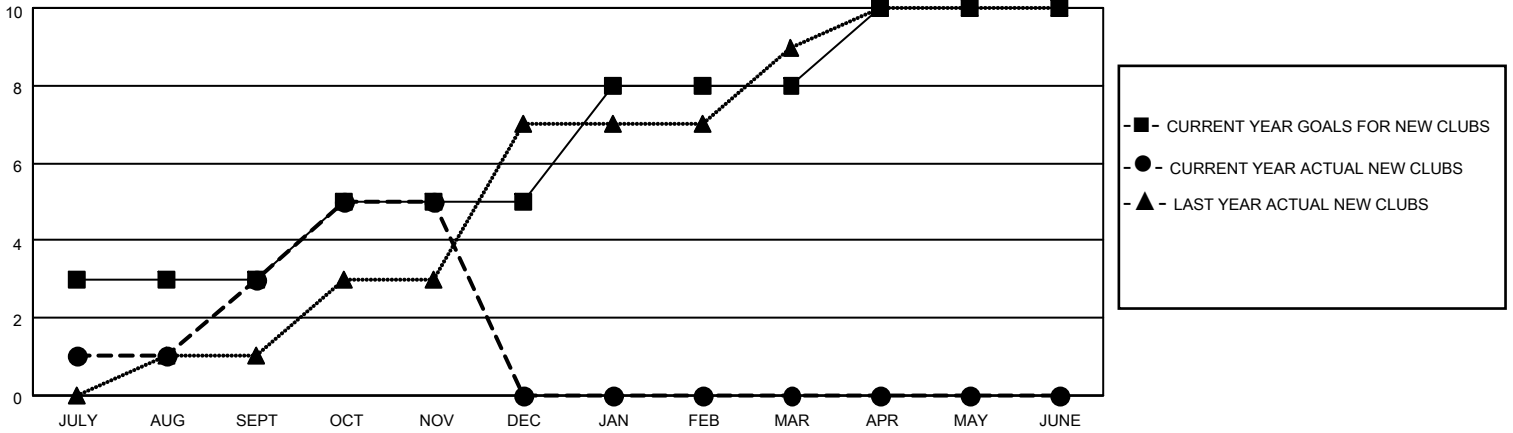
District 3233G2

Results as of: 11/30/2021

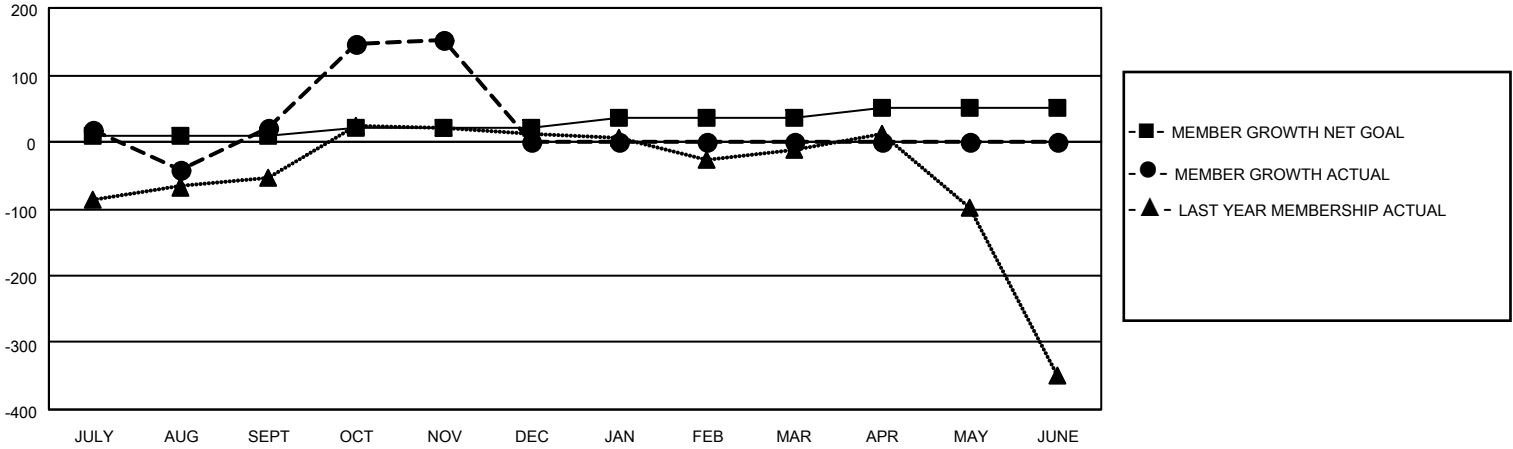
Clubs			
RESULTS FOR 2021-2022			
QUARTER	NEW CLUB GOAL	NEW CLUBS	DROPPED CLUBS
JULY/AUG/SEPT	3	3	6
OCT/NOV/DEC	2	2	1
JAN/FEB/MAR	3	0	0
APR/MAY/JUNE	2	0	0

Members			
RESULTS FOR 2021-2022			
QUARTER	MEMBER GROWTH NET GOAL	MEMBER GROWTH ACTUAL	DROPPED MEMBERS ACTUAL (including transfers)
JULY/AUG/SEPT	10	130	100
OCT/NOV/DEC	10	149	16
JAN/FEB/MAR	15	0	0
APR/MAY/JUNE	15	0	0

**GOALS AND ACTUAL NEW CLUBS CUMULATIVE**



**GOALS AND ACTUAL MEMBERS CUMULATIVE**



**DROPPED CLUBS: 7**

**39 CLUBS OF 119 ADDED 1 OR MORE NEW MEMBERS**

**GENDER DISTRIBUTION**

MALE	1,649 (64.59%)
FEMALE	892 (34.94%)
NON BINARY	0 (0.00%)
PREFER NOT TO ANSWER	12 (0.47%)

**DROPPED MEMBERS**

[CLICK HERE FOR CUMULATIVE MEMBERSHIP DATA](#)

DECEASED	2
CLUB CANCELLED	58
OTHER	56
<b>TOTAL</b>	<b>116</b>

TOTAL FAMILY UNIT MEMBERS 1,331

FAMILY MEMBERS PAYING HALF DUES 812